

INOXMARE®

HEX SOCKET BUTTON HEAD SCREWS WITH FLANGE, FT



DATASHEET
ART. 9335

FASTENERS | MARINE HARDWARE | FITTINGS | SOLAR

Via Pomposa, 51/i
47924 - Rimini (RN) - ITALY

Tel. +390541.794444 Fax +390541.794490
info@inoxmare.it - www.inoxmare.com

ART. 9335

TECHNICAL SPECIFICATIONS

The dimensions our screws art. 9335 are similar to ISO7380-2. The screws are always fully threaded and not marked on the head. Screws in according with ISO7380-2 are only available on request.

Please note that this article is a screw with reduced load capacity due to your head geometry. According to DIN 3506-1 / ISO 7380-1 the minimum load capacity is 80% of the strength class.

Material	Stainless steel
Quality	A2 / A4
Property class	070
Surface	blank
Mechanical properties	ISO 3506-1
Measurement letters and notations	ISO 225
Thread tolerance class	6g
Thread according to	ISO 965-1
General requirements	ISO 8992
Drive	Hexagon socket
Specialities	Full thread
Headmarking	without

YOUR ADVANTAGES



FLANGE / COLLAR HEAD

- › larger contact surface
- › time saving, washer already integrated

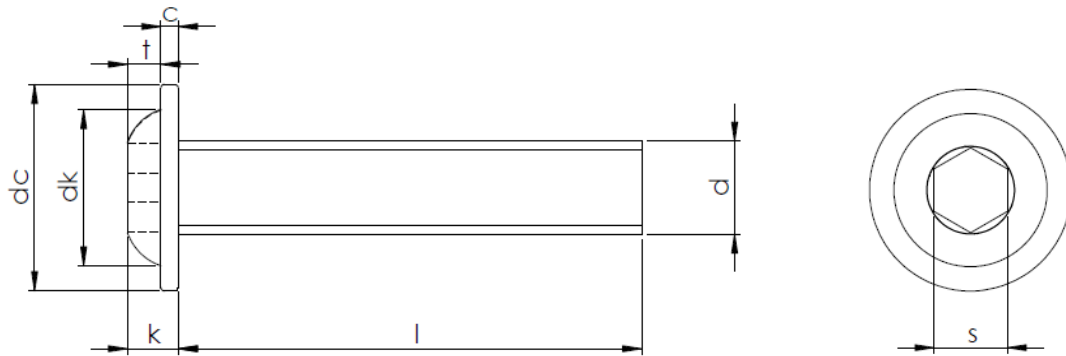


WITHOUT HEAD MARKING

- › Better optics – decorative head

FASTENERS | MARINE HARDWARE | FITTINGS | SOLAR

DIMENSIONS (MM)



thread d			M3	M4	M5	M6	M8	M10
dc	min.		6,30	8,80	11,10	12,90	17,10	21,00
	max.		6,90	9,40	11,80	13,60	17,80	21,90
dk	min.		4,90	6,80	8,40	9,60	12,80	16,10
	max.		5,20	7,20	8,80	10,00	13,20	16,50
k	min.		1,40	1,95	2,50	3,00	4,10	5,20
	max.		1,65	2,20	2,75	3,30	4,40	5,50
c	min.		0,50	0,60	0,80	1,00	1,20	1,70
	max.		0,70	0,80	1,00	1,20	1,50	1,90
t	min.		1,04	1,30	1,56	2,08	2,60	3,12
s	nom.		2	2,5	3	4	5	6
length l			M3	M4	M5	M6	M8	M10
nominal	min.	max.						
5	4,80	5,20						
6	5,76	6,24						
8	7,71	8,29						
10	9,71	10,29						
12	11,65	12,35						
16	15,65	16,35						
20	19,58	20,42						
25	24,58	25,42						
30	29,58	30,42						
35	34,50	35,50						
40	39,50	40,50						
45	44,50	45,50						
50	49,50	50,50						
60	59,40	60,60						

FASTENERS | MARINE HARDWARE | FITTINGS | SOLAR